

secure2trust overview

Controlling document access and use

Avoco Secure

 info@avocosecure.com

US: +1 415 839 9433

International: +44 207 851 6070

www.avocosecure.com

© Avoco Secure 2003-2008 - All rights reserved.

secure2trust Overview: Create, Collaborate, Control

- *Enable and encourage document sharing and creation through true secured collaboration*
- *Enable secure sharing of documents with external parties*
- *Offline securing of documents*
- *Intellectual property (IP) protection for your enterprise*
- *Set a geographic location from where document can only be opened*
- *Maintain document integrity and confidentiality to strengthen company competitive edge and achieve shareholder confidence*
- *Support for collaboration portals including EMC Documentum eRoom and Microsoft SharePoint*
- *Automated security policy application*
- *Help with regulatory compliance adherence*
- *Fast and simple installation across any size organisation with no need for a license server*
- *Support for PKI systems and digital certificates*
- *Support for Anyone access if they hold a certificate by a specified CA*
- *Support for use of Active Directory for authentication*

Create, Collaborate, Control

secure2trust is a document security application which provides access control and content protection for your documents. secure2trust provides unrivalled flexibility and choice in both how the document can be accessed and what can be done with the content after access is allowed. Flexibility has been built into the design as a key component; this is a best of breed product with an off-the-shelf feel.

secure2trust allows you to go beyond the layered security approach providing you with the means to extend your control outside of your organisation. Now, not only can you control your intellectual property within your company, but you can also ensure this control is applied outside the reach of your normal company security measures. The ability to control your digital assets, yet securely collaborate on their creation no matter where they go, is a key feature of secure2trust.

Driving Forces for Restricting the Use of Document Content

Digital documents need digital controls in the same way that hard copy documents need controls such as locked filing cabinets, confidentiality stamps and shredders. Enterprise Rights Management of information is the 21st century version of document control. secure2trust offers an unrivalled and flexible set of access and usage restrictions that can control and protect your documentation no matter how sensitive. The flexible nature of the digital restrictions applied by secure2trust also means that you can create protected documents in your normal working environment to allow working documents to be collaborated on in a controlled and secure manner. secure2trust works both online and offline to allow continued and uninterrupted working.

Key Benefits

- Secure document collaboration in your normal working environment
- Intellectual property protection and control
- Regulatory and compliance adherence
- Document confidentiality and integrity
- Dynamic and persistent document content control throughout the document workflow process
- Secure inter and intra company document sharing

Key Features

- Persistent digital restrictions that stay with a document even outside of your company network
- Unrivalled choice of authentication methods
- Integration with Active Directory
- Integration with PKI systems and digital certificates
- Full range of content usage restrictions
- Secure document recovery
- Create and enforce document policies silently (invisible to end user)
- Option to create user hierarchies
- Watermarking
- Enforce use of security templates based on document classification
- Super User creation for compliance officers, etc
- No need for a license server so full support for offline document protection

- Application of restrictions based on a per user basis, e.g. user 1 access is read only whilst user 2 access is secure edit
- Support for use of more than 1 authentication measure to access a document – multiple factor authentication

Supported Applications

Out of the box support for:

- Microsoft Office Word 2002-2007 (Including 2007 native formats)
- Microsoft Office Excel 2002-2007 (Including 2007 native formats)
- Microsoft Office PowerPoint 2002-2007 (Including 2007 native formats)
- Adobe Reader PDF 7 and 8
- Other formats on request

Supported Access Control Methods

- Active Directory
- Password
- GPS Location
- Digital Certificates
- Windows Card Space
- Anyone or specified ownership of a specific issued certificate

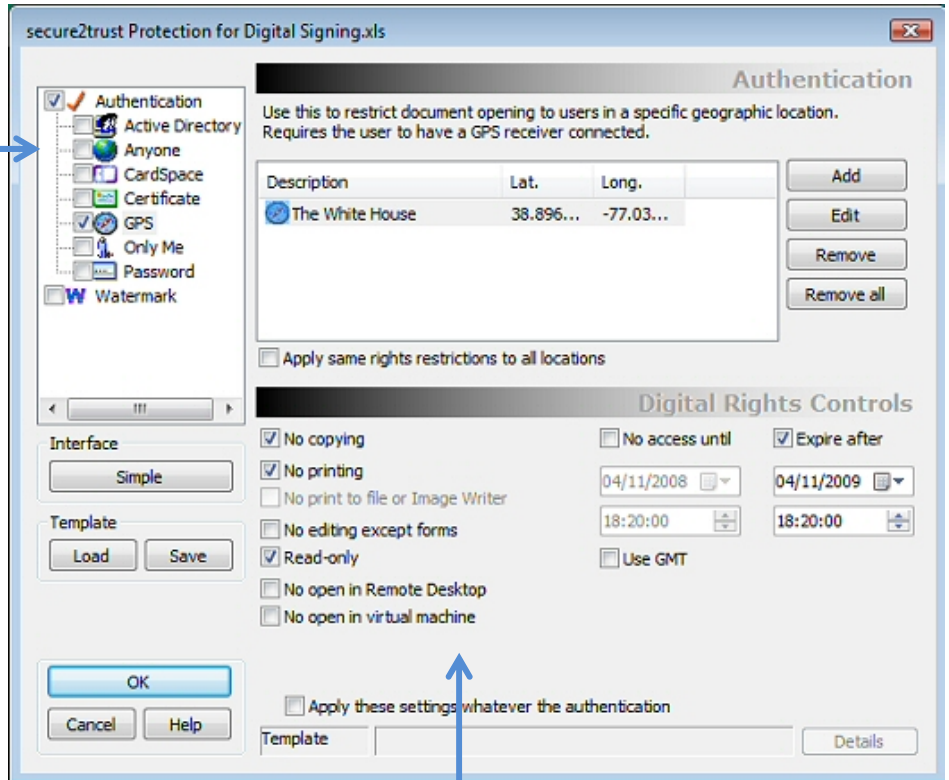
Combinatorial Access Control

secure2trust uniquely allow you to combine authentication controls so that you can specify that more than one method is required to gain access to a document or that different access control methods are associated with different rights restrictions.

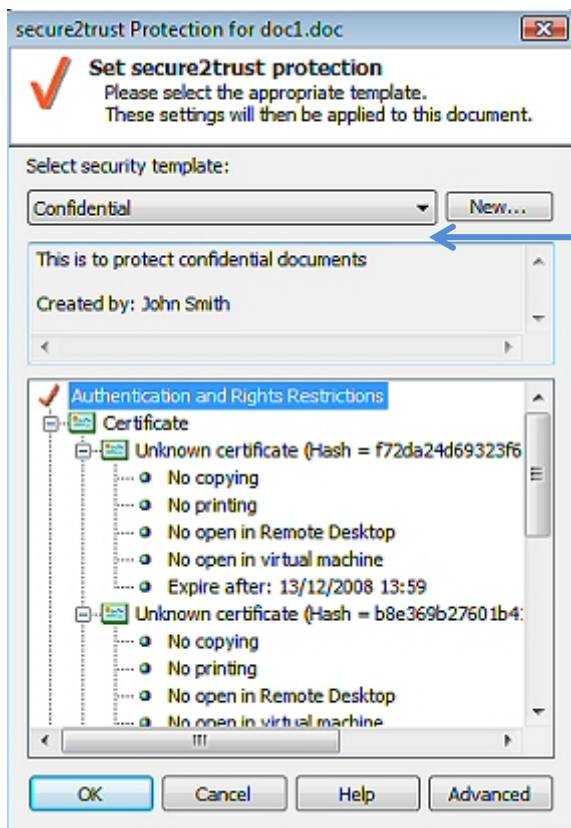
secure2trust Client – Installed on Each Client

The secure2trust client is installed on all machines needing to protect and access protected documents. A secure2trust viewer, secure2view, is available for users who only need to access protected documents.

secure2trust has a number of authentication options to choose from including GPS location. The secure2trust protection interface can be made hidden from the end user and restrictions applied automatically.



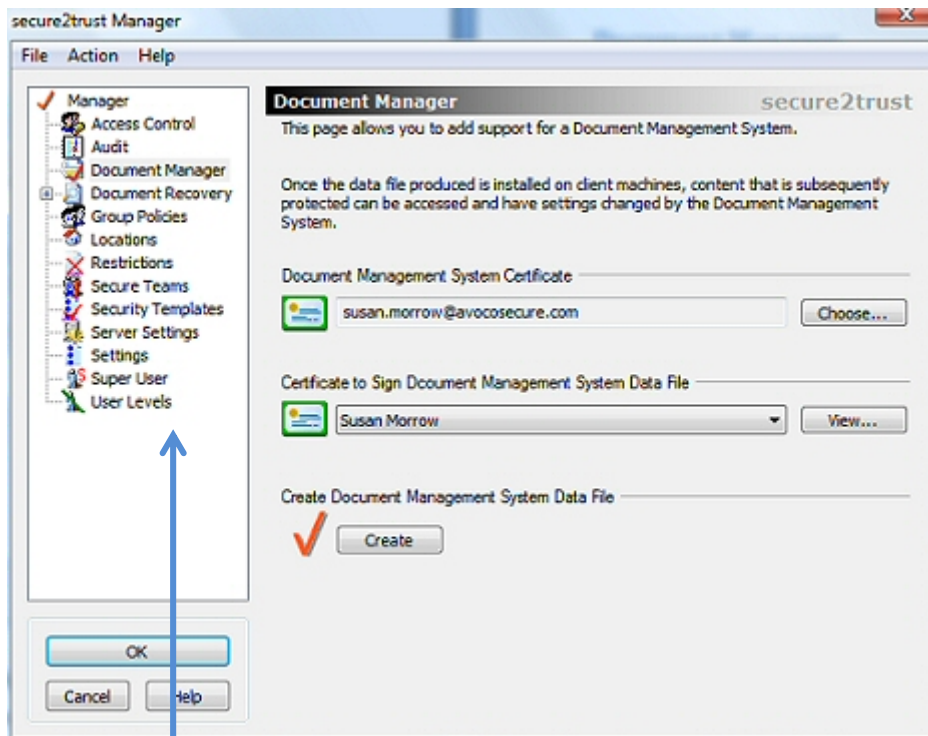
Flexible usage control settings allow you to protect your intellectual property whilst allowing continued editing



The simple interface is an alternative to the interface shown above. It allows you to select pre-configured security policies based on document classification

secure2trust Manager

The secure2trust Manager is installed and used by the secure2trust system administrator. It is an optional component and used to setup secure document recovery, a Super User, control the application of security policies, *etc.*



The secure2trust Manager offers a range of functions including secure document recovery setup, Super User creation, Audit and central enforcement of document security.

Easy Install, Implementation and No User Training

secure2trust has a simple installation process which means your organisation can be up and running in hours. There is no need to configure user databases or license servers.

Because secure2trust is simple to use and can be set so that security is enforced centrally with no user intervention, end user training is minimal and often not required.

